



**SOUND** (provided by the programmer)

- 1 audio board 12-4-2.
- 1 P.A.
- 1 monitors
- 2 Direct Box (D.I.) for keyboard and sampler
- 1 SM58
- Sound cables

**ELECTRICITY** (provided by the programmer):

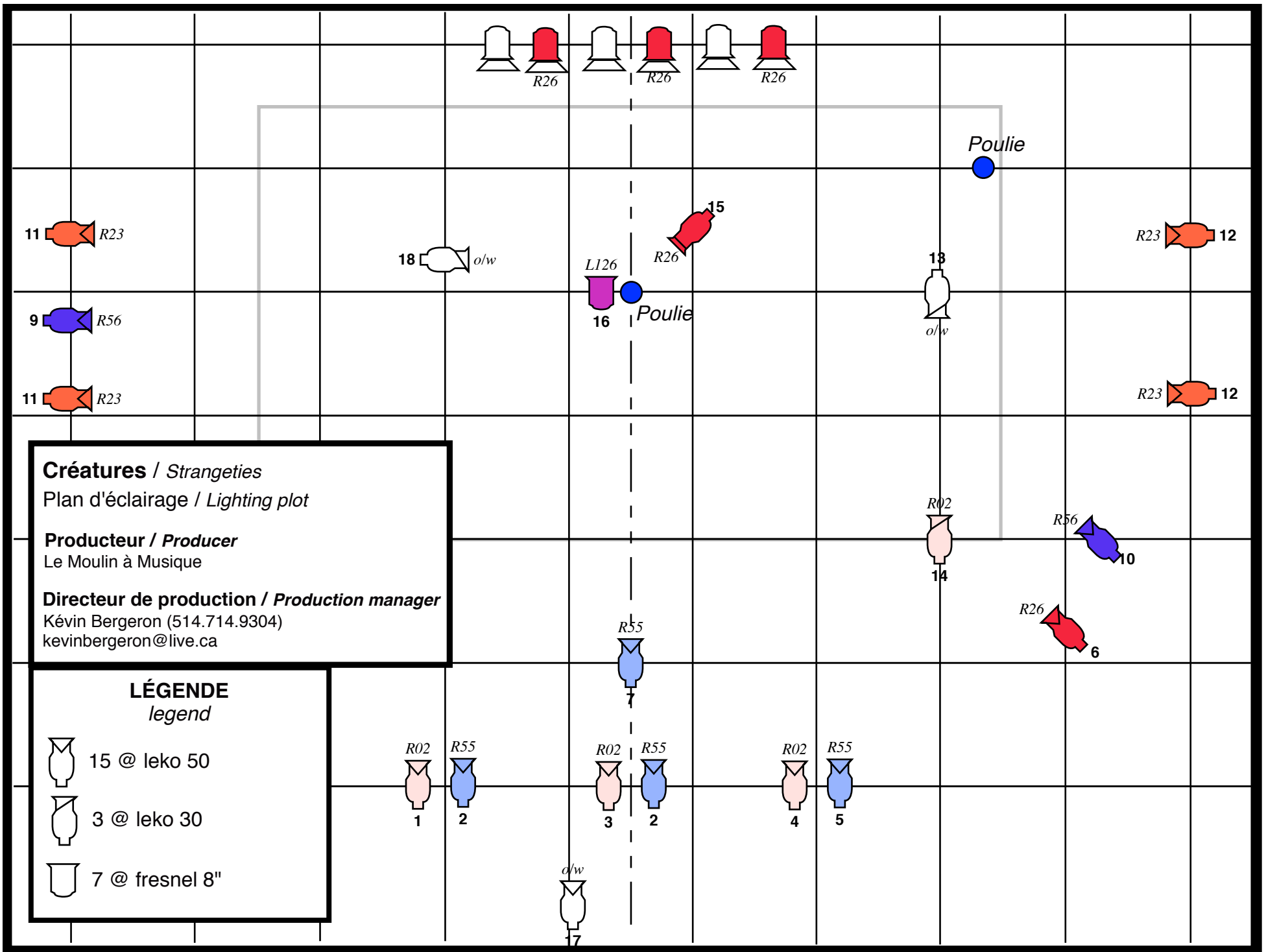
- 1 circuit 110 volts/15 amps/UGround on stage right for:
  - 1 keyboard
  - 1 sampler
  - 1 keyboard lamp

**OTHER NEEDS**

- Precise location of loading dock
- Parking for 2 vehicles of Le Moulin à Musique's team
- Service elevator to bring the set from the dock to the stage (if necessary)
- Dressing room with sink, mirror, coat-hangers and toilets
- Coffee, drinking water and fruits (if possible)

**CONTACT:** Kevin Bergeron  
Office : 514-714-9304  
Cell : 514-701-9304  
Mail : kevinbergeron@live.ca

**Technical rider approved by:** \_\_\_\_\_




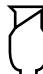
**Créatures / Strangeties**  
 Plan d'éclairage / Lighting plot


**Producteur / Producer**  
 Le Moulin à Musique

**Directeur de production / Production manager**  
 Kévin Bergeron (514.714.9304)  
 kevinbergeron@live.ca

**LÉGENDE**  
 legend

 15 @ leko 50

 3 @ leko 30

 7 @ fresnel 8"

R02  
1

R55  
2

R02  
3

R55  
2

R02  
4

R55  
5

o/w  
7

18 o/w

L126  
16

15  
R26

Poulie

13  
o/w

Poulie

R02  
14

R56  
10

R26  
6

11 R23

9 R56

11 R23

R23 12

R23 12